

AUCKLAND 4—21 **ARTS FESTIVAL** MARCH 2021 **TE AHUREI TOI O TĀMAKI MAKĀURAU**

Social Story Booklet

About you

Name:

Contact details in case of accident or emergency:

When are you visiting Auckland Arts Festival?

How are you getting there?

What do you feel excited about?

What do you feel nervous about?

What is Auckland Arts Festival?

Welcome to Auckland Arts Festival / Te Ahurei Toi o Tāmaki (AAF)!

We aim to inspire the people of Tāmaki Makaurau and our many visitors through the Arts.

Coming to a Festival event doesn't need to be scary.

We hope this social story will give you an idea of what you might experience when you visit.

Tāmaki Makaurau is the Māori name for Auckland.



The Festival begins on Thursday 4 March and finishes on Sunday 21 March, 2021.

Where does AAF 2021 take place?

AAF events take place in over 20 venues across Auckland.

Some of these are traditional theatre spaces in the central city. Some are in open public areas like Aotea Square.

We have hosted events in art galleries, hotel rooms and even schools.

The venue of the show or event you are attending will be listed on our website.

COVID-19 and keeping safe

There will be contact tracing facilities at all Auckland Arts Festival events.

If you are concerned about attending an event during Level 1, some things you can do to ensure your safety are:

- Wear a face mask that covers your nose and mouth.
- Use hand sanitiser after you touch common areas such as doorhandles.
- Plan to use contactless payment, like PayWave on your EFTPOS card.

COVID-19 Ticketing Terms

1. We ask you to play your part and not attend an Auckland Arts Festival (AAF) performance if the following applies to you or any members of your group:
 - You have COVID-19 or are awaiting the results from a COVID-19 test
 - You are currently subject to a 14-day isolation period
 - You are feeling unwell with symptoms associated with COVID-19 (e.g. fever, cough, sore throat, shortness of breath, sneezing/running nose, loss of sense of smell and/or taste)
 - You have come into close contact with any known or suspected case of COVID-19 in the past 14 days

2. A refund may be authorised by AAF due to any of the reasons outlined in Clause 1. If your booking is as part of a group, you are of course very welcome to pass your ticket on to another friend or family member.
3. In the event AAF needs to cancel a performance due to COVID-19, you will be entitled to a full refund.
4. You agree that we may have to share your personal data with the Ministry of Health for the purposes of contract tracing.
5. The primary ticket purchaser (account holder) is responsible for knowing the contact details of all attendees in their group (including their full name, contact email and contact phone number). In the event the primary ticket purchaser is contacted directly by the Ministry of Health for the purposes of contact tracing, they must make these details available to the Ministry of Health for that purpose.
6. By entering the venue, you agree to comply with all COVID-19 related instructions displayed at your performance venue at the time. Failure to do so may mean you will be removed from the venue.

Buying tickets:

To book Access tickets, complete the booking form located on the relevant event listings on our website: www.aaf.co.nz

Alternatively, you can email your booking request to us at access@aaf.co.nz

If you cannot attend an Access performance and wish to come to a standard performance on another date, let us know by emailing access@aaf.co.nz

Pay what you can:

If there is an event you hope to attend as a group but cannot afford, please email access@aaf.co.nz to enquire about our Pay What You Can initiative. We may be able to help out.

Relaxed events:

You might find some AAF events overwhelming. If this happens, you might prefer to attend a relaxed performance.

These performances take place in a supportive environment, with a relaxed approach to noise and movement.

We also reduce audience numbers so that attendees can move around more easily.

Relaxed performances can be a great way to ensure all people and their families feel welcome and comfortable.

Things you can expect to see during AAF

Crowds and queues



Costumes



Performances in public spaces



Be prepared:

- AAF will be very busy, so expect a lot of people and noises.
- You could be walking around Auckland for long periods of time. Make sure you wear comfortable footwear.
- Noises you may hear in the city: car horns, construction tools, cars backfiring, people speaking different languages.
- Plan to arrive early. This will help your visit to run smoothly.



Getting around Auckland

Train, bus, taxi or walking? For bus, train and ferry timetables check [Auckland Transport](https://www.aucklandtransport.co.nz/) or phone 09 366 6400.

- If you are planning to use public transport, you can purchase an AT HOP card. Once you have added credit, you can use the card to pay for all train services, all public bus services and most ferry services within Auckland.

You can buy HOP cards for \$10 at most convenience stores in Auckland's CBD.



- You could contact a community support person to see if there is a group you can travel with. E.g. try the Auckland office for [Autism NZ](https://www.autismnz.org.nz/).
- Some events take place on Waiheke Island. You can find transport advice in the venue listing for Artworks Community Theatre below.

Where to find drinking water

- Most performance venues will have a water cooler you can help yourself to.
- All licensed premises (places that serve alcohol) are required by law to provide free tap water.

First aid

- Each individual event and venue has a person in charge of first aid. If you need help during an event, go to the box office at the venue and they will be happy to help you.

Toilets

- You can find public toilets at each AAF venue.
- During AAF, there will be a disability toilet in Aotea Square for public use.
- There are also accessible toilets in Aotea Centre or the Auckland Town Hall.

VENUES AT AAF 2021

Auckland City:

Auckland Arts Festival Aotea Square Ticket Booth	Pg. 12
Objectspace Gallery	Pg. 13
ASB Waterfront Theatre	Pg. 14
Q Theatre	Pg. 15
Auckland Town Hall	Pg. 16
Kiri Te Kanawa Theatre, Aotea Centre	Pg. 17
The Civic Club, Civic Theatre	Pg. 18
Festival Garden, Aotea Square	Pg. 19
The Civic Carpark	Pg. 20

North Auckland:

Bruce Mason Centre	Pg. 21
Warkworth Town Hall	Pg. 22

West Auckland:

MOTAT (Museum Of Transport And Technology)	Pg. 23
Coyle Park, Point Chevalier	Pg. 24
Byers Walkway, Piha	Pg. 25
Lopdell House Rooftop, Titirangi	Pg. 26

East Auckland:

Te Oro	Pg. 27
Artworks Community Theatre, Waiheke Island	Pg. 28

South Auckland:

Māngere Arts Centre	Pg. 29
Hawkins Theatre, Papakura	Pg. 30

AUCKLAND CITY VENUES:

Auckland Arts Festival Aotea Square ticket booth



Our AAF information and ticketing booth can be found in Aotea Square – look out for the big red Welcome sign! This is where you can ask for help to find your way around the city, as well as help booking tickets.

AUCKLAND CITY VENUES:

Objectspace Gallery

13 Rose Road, Ponsonby



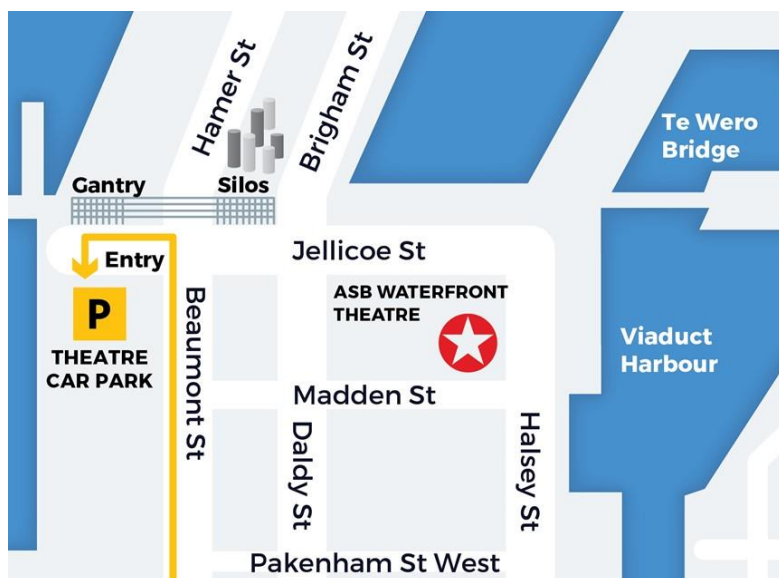
This is an art gallery in Ponsonby. It is free to enter to view the exhibition, and wheelchair accessible.

There is an accessible bathroom at the gallery.

There is plenty of off-street parking nearby and it is a short walk from 90 Ponsonby Road, one of the stops on the Inner City Link Bus.

AUCKLAND CITY VENUES:

ASB Waterfront Theatre



Parking:

You can pre-book a carpark at:

<https://www.asbwaterfronttheatre.co.nz/your-visit/parking/>

Vehicle entry to and from this secure carpark is at 94 Jellicoe Street. A representative from the Theatre will be available to assist you.

Bus:

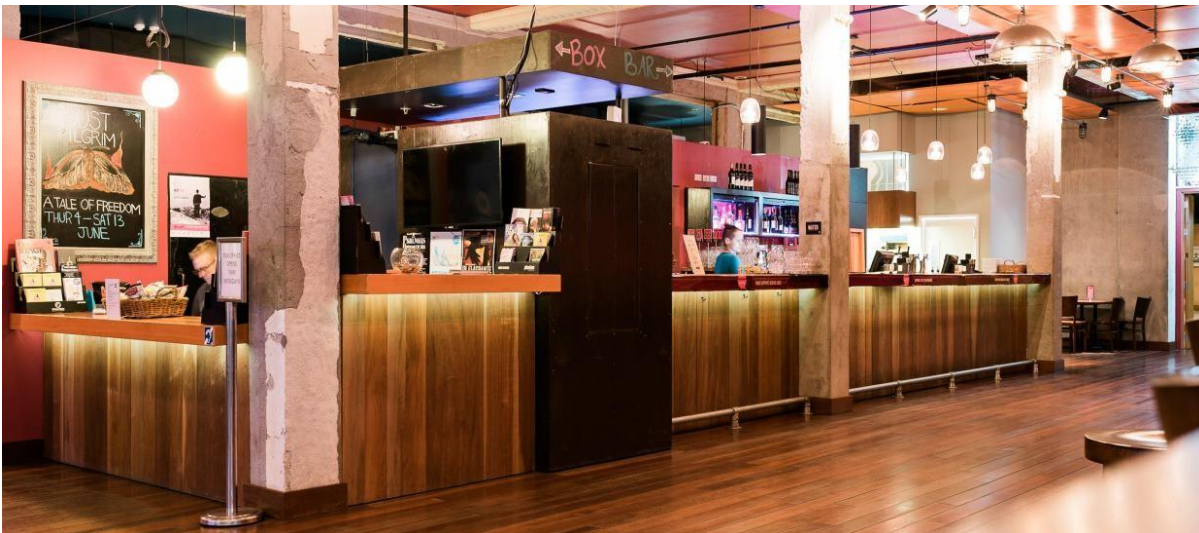
The Theatre is a short walk (4mins) from the Daldy Street bus stop, where the CITY Link bus stops regularly.

AUCKLAND CITY VENUES:

Q Theatre



The best parking for this venue is the Civic Car Park (see below).



Q Theatre is on Queen Street, making it easy to get to on almost every bus that stops in Auckland's CBD. It is a wheelchair accessible building.

AUCKLAND CITY VENUES:

Auckland Town Hall

The Great Hall and Concert Chamber are both in this building.



You can take a virtual tour of the Town Hall [here](#).

The Auckland Town Hall is easily accessible for wheelchair users. Both the Great Hall and Concert Chamber offer hearing loops. Guide dogs are welcome. The Town Hall is on Queen Street, making it easy to get to on almost every bus that stops in Auckland's CBD.

The best parking for this venue is the Civic Car Park (see below).

AUCKLAND CITY VENUES:

Kiri Te Kanawa Theatre in Aotea Centre



You can take a virtual tour of the Kiri Te Kanawa Theatre [here](#).

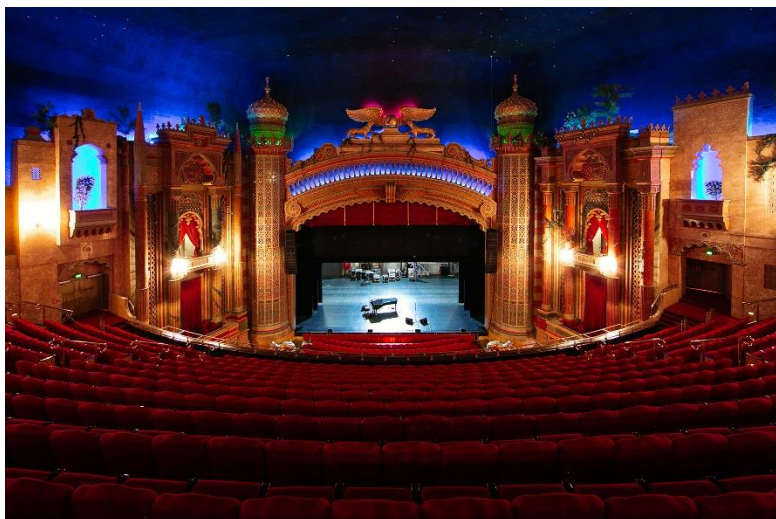
This used to be called the ASB Theatre in Aotea Centre, but has changed its name.

It is a wheelchair accessible building, right in the middle of Aotea Square. This makes it easy to get to on almost every bus that stops in Auckland's CBD.

The best parking for this venue is the Civic Car Park (see below).

AUCKLAND CITY VENUES:

The Civic Club, Civic Theatre



The best parking for this venue is the Civic Car Park (see below).

The Civic is on Queen Street, making it easy to get to on almost every bus that stops in Auckland's CBD.

The Civic Club is a temporary venue housed in The Civic for the duration of AAF 2021.

The audience will be seated on the stage of The Civic – at tables or in bleacher seating, depending on the ticket purchased. Wheelchair access is available via the stage door (Wellesley Street entrance). Accessible bathrooms will be available via a designated dressing room, which audience members will pass on the way to take their seats.

There is unfortunately no hearing loop available for live music events at The Civic Club.

Front of house staff will be available to help patrons with their individual needs.

AUCKLAND CITY VENUES:

Festival Garden, Aotea Square

The Festival Garden is set up in Aotea Square and is mostly active over the weekends of AAF.

There will be foodtrucks and free public events in the Festival Garden. This is where the opening and closing celebrations for Auckland Arts Festival will be held.

There are lots of places to sit down in the Square. It is outdoors with limited shelter so you may need to bring warm clothing and/or sunscreen, depending on the weather and time of day.

The best parking for this venue is the Civic Car Park (see below).

Aotea Square is located between Queen Street and Mayoral Drive, making it easy to get to on almost every bus that stops in Auckland's CBD.



AUCKLAND CITY VENUES:

The Civic Car Park

The Civic Car Park is the closest carpark to Aotea Centre, Auckland Town Hall and Q Theatre.

A limited number of pre-paid parking spaces are available on Level 2 of the Civic Car Park. You can book these when you purchase an AAF ticket through Auckland Live.

Entry is via Greys Avenue or Mayoral Drive.



The Civic Car Park has 20 mobility spaces available. The first 2 hours are free, then usual rates apply. Parking after 6pm and weekends is free. You are allowed one entry and exit per parking session. Take your mobility card and entry ticket to a pay machine and press the help button for instructions.

For general parking, usual rates apply. Find out more [here](#).

NORTH AUCKLAND VENUES:

Bruce Mason Centre (Takapuna)



You can take a virtual tour of the Bruce Mason Centre [here](#).

The Bruce Mason Centre has a quiet space on the first floor for audiences who need a break or are feeling overwhelmed.

Bus 82 from Victoria Street West in Auckland's CBD can drop you at Hurstmere Rd/Killarney St, a 2-minute walk from the Bruce Mason Centre.

There is plenty of parking available near the venue.

NORTH AUCKLAND VENUES:

Warkworth Town Hall

2 Alnwick Street, Warkworth



This is a regional venue, which means it is not located in central Auckland. It is a 1.5hr (approx) bus ride from Auckland CBD or a 1hr (approx) drive. Make sure you allow time to find parking, either outside the Warkworth Town Hall or next door at the Warkworth Catholic Church.

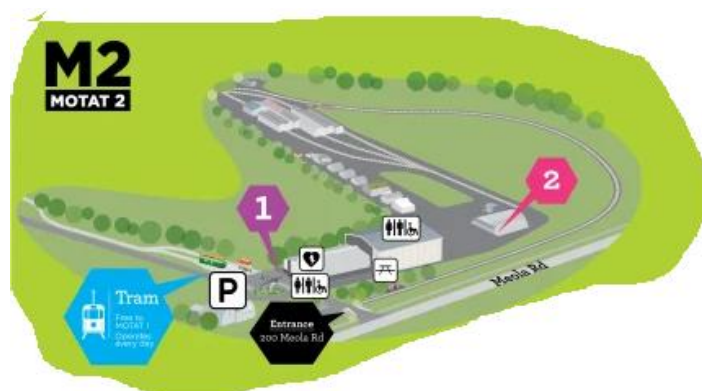
You can plan your bus journey at <https://at.govt.nz/>

There is a lobby in the building, where you can wait before the start of the performance.

WEST AUCKLAND VENUES:

MOTAT 2

200-208 Meola Road, Western Springs, Auckland 1022



MOTAT is the shortened name for Museum of Transport and Technology

There is free parking at MOTAT 2 or you can take the OUTER Link bus from Mayoral Drive/Myers Park and get off at Meola Rd outside MOTAT 2.

To attend Anthonie Tonnin's *Rail Land*, you can park or arrive at the Meola Road entrance of MOTAT 2. You can catch either the 7pm or the 7.30pm tram to arrive at the performance on time (8pm).



The performance takes place in the old Waitakere tram station, which has been relocated to MOTAT. The tram will bring you here.

After the performance, you can ride the tram back to your MOTAT 2.

WEST AUCKLAND VENUES:

TBC Location in Coyle Park, Point Chevalier

528 Point Chevalier Road, Point Chevalier, Auckland 1022



Aerial dance means the performers are safely connected to the trees by ropes and will dance while in the air. This is very safe and they will not fall.

This is the outdoor location for a free aerial dance performance called *The Air Between Us*.

Both performers will be harnessed and performing the piece mid-air between trees. Attendees are welcome to bring a chair, as they will otherwise be standing for around 40 minutes. Coyle Park does have wheelchair accessible pathways, although you may need to cross grass at some point.

This is a free event – you do not need a ticket to enjoy this performance.

WEST AUCKLAND VENUES:

Byers Walkway, Piha

Glenesk Rd, Piha



Promenade is a type of performance which involves travelling along a set path, led by the performers.

This is the venue for a promenade performance called *He Owaha Matarua – Hauntology of Inheritance*. The walk/roll will be 90 minutes long. Attendees are invited to enjoy food and conversation with the performers at the end.

The performers are both wheelchair users, and the pathway is completely wheelchair accessible. If you need assistance with transport to this venue, please let us know when you book your ticket. We have wheelchair-user and non-wheelchair transport support available, but spaces are limited.

WEST AUCKLAND VENUES:

Lopdell House Rooftop

418 Titirangi Road, Titirangi



This is the venue for the ‘New Moon Folk Ball’ on March 13.

There is wheelchair access to the rooftop.

There is plenty of free parking behind Lopdell House, accessed by the entrance off South Titirangi Road.

Bus 172X from Victoria Street West/Elliot Street in Auckland’s CBD takes 40 minutes to get to Titirangi. The bus can stop at 402 Titirangi Road, a 2-minute walk from Lopdell House.

EAST AUCKLAND VENUES:

Te Oro

98 Line Road, Glenn Innes



This is a regional venue, which means it is not in central Auckland. Make sure you allow time to find parking or for potential delays on public transport.

On-street parking is available nearby, including on Maybury St, Line Road and Taniwha Street, which is a 3-minute walk to Te Oro.

You can take the Eastern Train Line from Britomart Train Station to Glen Innes (approx 20mins). Te Oro is a 6-minute (approx) walk from that station.

There is a lobby in the building, where you can wait before the start of the performance.

EAST AUCKLAND VENUES:

Artworks Community Theatre

2 Korora Road, Waiheke Island



This is a regional venue, which means it is not in central Auckland.

You will need to arrange to catch a ferry to and from Waiheke Island, if you are visiting from Auckland City. Ferries depart Waiheke between 7am and 7pm from Monday to Saturday. The last ferry departs Waiheke at 5.30pm on Sundays. Return ferry tickets cost around \$35 each. Book tickets via <https://www.fullers.co.nz/buy-tickets/>.

It is possible to take your car on the ferry, although public transport and taxis are available for use on Waiheke Island.

SOUTH AUCKLAND VENUES:

Māngere Arts Centre

Corner of Bader Drive and Orly Avenue, Māngere



This is a regional venue, which means it is not in central Auckland. Make sure you allow time to find parking or for potential delays on public transport.

Bus 309X travels from The Civic/Wellesley Street directly to Māngere Arts Centre. The trip takes approx 1 hour 15 minutes.

This theatre is wheelchair accessible and offers a hearing loop. Assistance animals are welcome.

There is a lobby in the building, where you can wait before the start of the performance.

SOUTH AUCKLAND VENUES:

Hawkins Theatre

13 Ray Small Drive, Papakura



This is a regional venue, which means it is not in central Auckland. Make sure you allow time to find parking or for potential delays on public transport.

Hawkins Theatre is a 1-hour (approx) train journey from Britomart Train Station on the Southern (red) trainline. It is a 10-minute walk from Papakura station.

There is a lobby in the building, where you can wait before the start of the performance. Wheelchair seating and access is available.

Have a look at our Accessible Event Guide for more information on accessible shows and events.