

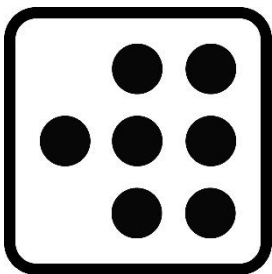
# **AUCKLAND** 4—21 **ARTS FESTIVAL** MARCH 2021 **TE AHUREI TOI O TĀMAKI MAKĀURAU**

## Accessible Event Guide

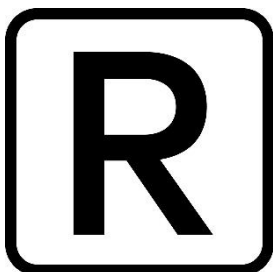
This guide is for performances in our programme that offer accessible ticketing. These performances cost \$20 for people with disabilities and accessibility needs. Space is limited.

For details on all Access shows and events, visit our website [www.aaf.co.nz](http://www.aaf.co.nz).

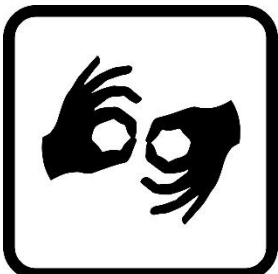
## What do the icons mean?



Braille resources available.



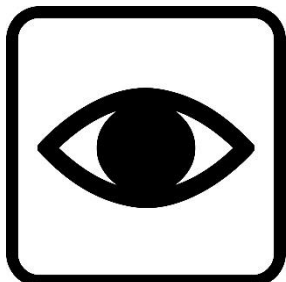
Relaxed performance.



NZSL Interpreted performance.



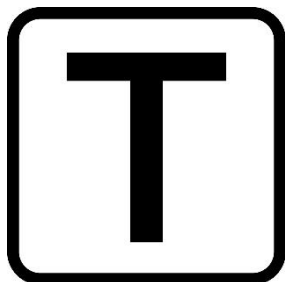
Audio Described performance.



Very Visual Performance, suitable for Deaf and hard of hearing patrons. NZSL video available with information ahead of time.



Hearing loop or assistive listening devices available.



Touch Tour will be held for Access patrons, 90 minutes prior to the event start time.



Wheelchair friendly event, Access areas available.

## **HOW TO BOOK:**

To book Access tickets, complete the booking form via the relevant event page on our website: [www.aaf.co.nz](http://www.aaf.co.nz)

If you would like to attend a show but can't attend the Access performance, please contact us to secure \$20 Access tickets to another performance: [access@aaf.co.nz](mailto:access@aaf.co.nz)

## **PAYMENT AND COLLECTING TICKETS:**

Tickets can be purchased online using a credit card.

You can choose to collect tickets at the venue before a performance, or to have them emailed to you. Please let us know at the time of booking if you would like to collect your tickets or to have them emailed to you.

## **QUESTIONS?**

Please contact our Access and Inclusion Programme Coordinator Natalie Braid with any additional queries:

Email: [access@aaf.co.nz](mailto:access@aaf.co.nz) ; [natalie.braid@aaf.co.nz](mailto:natalie.braid@aaf.co.nz)

Phone: 09 374 0320

Text: 021 090 23814

Another useful service is [NZ Relay Service](#).

## COVID-19 Terms & Conditions

1. We ask you to play your part and not attend an Auckland Arts Festival (AAF) performance if the following applies to you or any members of your group:
  - You have COVID-19 or are awaiting the results from a COVID-19 test
  - You are currently subject to a 14-day isolation period
  - You are feeling unwell with symptoms associated with COVID-19 (e.g. fever, cough, sore throat, shortness of breath, sneezing/running nose, loss of sense of smell and/or taste)
  - You have come into close contact with any known or suspected case of COVID-19 in the past 14 days
2. A refund may be authorised by AAF due to any of the reasons outlined in Clause 1. If your booking is as part of a group, you are of course very welcome to pass your ticket on to another friend or family member.
3. In the event AAF needs to cancel a performance due to COVID-19, you will be entitled to a full refund.
4. You agree that we may have to share your personal data with the Ministry of Health for the purposes of contract tracing.
5. The primary ticket purchaser (account holder) is responsible for knowing the contact details of all attendees in their group (including their full name, contact email and contact phone number). In the event the primary ticket purchaser is contacted directly by the Ministry of Health for the purposes of contact tracing, they must make these details available to the Ministry of Health for that purpose.
6. By entering the venue, you agree to comply with all COVID-19 related instructions displayed at your performance venue at the time. Failure to do so may mean you will be removed from the venue.

## **EVENT GUIDE**

<b>He Owha Matarua – Hauntology Of Inheritance</b>	<b>Pg. 7</b>
<b>Heavenly Bodies</b>	<b>Pg. 8</b>
<b>Pūmanawa</b>	<b>Pg. 9</b>
<b>Shoulder To Shoulder (APO Open Rehearsal)</b>	<b>Pg. 10</b>
<b>Sing To Me</b>	<b>Pg. 11</b>
<b>Strasbourg 1518</b>	<b>Pg. 12</b>
<b>Taku Tau Kahurangi: An Aoteroa Love Story</b>	<b>Pg. 13</b>
<b>Te Tīmatanga</b>	<b>Pg. 14</b>
<b>The Air Between Us / A Figure Exhales</b>	<b>Pg. 15</b>
<b>The Artist</b>	<b>Pg. 16</b>
<b>The Griegol</b>	<b>Pg. 17</b>
<b>The Haka Party Incident</b>	<b>Pg. 18</b>
<b>Voices At The End</b>	<b>Pg. 19</b>

## He Owha Matarua – Hauntology Of Inheritance

Community. Byers Walkway, Piha (outdoor location).



**Saturday 12 – Sunday 13 March, 2:30pm**

A unique and special walk/roll that focusses on whakapapa (ancestry), history and a deepening experience of the beautiful forest at Byers Walkway, Piha.

Performance artists Suzanne Cowan and Rodney Bell are wheelchair users, giving them a unique perspective on navigating and choreographing space. Join them on a journey of history, colonisation, birds, trees and insects, while asking the question: how can we enjoy nature while also limiting our impact on it?

The entire walk/roll is 90 minutes, and will be followed by a 60-minute reflective gathering with kai (food). The event duration is 2.5 hours in total. AAF has wheelchair transport available to this event. You can request transport assistance when booking tickets.

## Heavenly Bodies

Circus/Dance/Cabaret. The Civic Club.



**Saturday 13 March, 5pm (NZSL Interpreted)**

A group of New Zealand's finest circus superstars, acrobats and weird and wonderful performers perform a delightful and passionate cabaret.

*Heavenly Bodies* is a dazzling cabaret performance of aerialists flying in the face of gravity, atomic acrobats with a lust for life, and beautiful dancers all exploring passion and desire.

This performance is 2 hours long, including a 20-minute interval.



## Pūmanawa

Music/Dance/Kapa Haka. Kiri Te Kanawa Theatre, Aotea Centre.



### About kapa haka

Kapa haka is a way to express and showcase heritage and cultural identity through song and dance, and a way to celebrate who and where we are in the world.



**Saturday 21 March, 3pm**

**Touch Tour begins 90 minutes before the performance (1:30pm).**

**Bilingual Audio Described performance: Te Reo Māori, Te Reo Pākehā.**

Pūmanawa brings together four brilliant kapa haka who embody the idea of legacy, talent and dedication to a centuries-old way of celebration.

Join Te Rōpū Manutaki, Te Iti Kahurangi, Tūwhitia kia Angitu and 2019 Te Matatini winners Ngā Tūmanako as they sing and haka with full voices, fierce wairua (spirit) and boundless energy.

This performance will be 3.5 hours long, with a 20-minute interval.

## Shoulder to Shoulder

Classical music. Great Hall, Auckland Town Hall.



**Relaxed performance:**  
**Sunday 7 March, Time TBC**

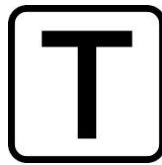
The Auckland Philharmonia Orchestra (APO) celebrate International Women's Day with music and words from inspirational women, including a world premiere commission for taonga puoro and orchestra by Ruby Solly, work by Pulitzer Prize winner Julia Wolfe, and more.

This will be an open rehearsal of the full orchestra playing for 90 minutes. As a relaxed performance, audiences can move around and talk if they need to during the rehearsal.

The Auckland Philharmonia Orchestra have audio adaptive equipment for patrons with hearing sensitivity and neurodiversity. Please email us to confirm whether you require this to attend, at [access@aaf.co.nz](mailto:access@aaf.co.nz)

## Sing To Me

Theatre. Rangatira, Q Theatre.



Audio Described Performance:

Friday 12 March, 7:30pm

**Touch tour begins 90 minutes before the performance (6pm).**

Inspired by the Pania of the Reef legend, this modern romance mixes comedy with song and characters you'll fall in love with.

Two worlds collide when mild-mannered optometrist Ata and fierce sea maiden Whetū fall in love. The result: a child of both land and sea, with Ata and Whetū navigating challenges of cross-cultural relationships and differing ideas of parenthood. Set against the backdrop of a climate in crisis, *Sing to Me* is a powerful reimagining of pūrākau (stories) of old in the 21st century.

This show is 2 hours long, including a 20-minute interval.

## Strasbourg 1518

Theatre/Dance. ASB Waterfront Theatre.



Audio Described performance:

**Saturday 20 March, 8pm**

**Touch tour begins 90 minutes before the performance (6:30pm).**

A story of revolution through dance, this electrifying production explores one of history's most fascinating mass movements – the dancing plague of 1518.

Living in poverty and under the rule of the patriarchy, the people of Strasbourg revolted one summer against oppression by taking to the streets. No ordinary protest, their uprising was a fever of dance on a scale never seen before – nor again – that lasted for months.

This show is 75 minutes in duration, with no interval.

## Taku Tau Kahurangi: An Aoteroa Love Story

Music. Great Hall, Auckland Town Hall.



**NZSL Interpreted performance:**

**Thursday 4 March, 7:30pm**

Come together with Ria Hall and friends for a Festival opener concert celebrating aroha, through a performance of covers of beloved songs from Aotearoa.

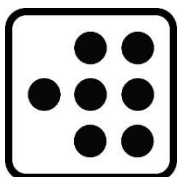
Let your spirits be lifted and enjoy a journey together through a sensory experience of our music, lyrics and imagery.

This show is 60 minutes with no interval.



## Te Tīmatanga

Free/Music/Community/Public sing-a-long. Aotea Square.



**Thursday 4 March, 6pm**

**Braille songbooks and wheelchair access area available.**

Come together and let your voices soar throughout Tāmaki Makaurau (Auckland) to mark the start of the Festival – three weeks of uplifting arts, culture, celebration and kotahitanga/unity. Join Ngāti Whātua Ōrākei as they lead us in launching AAF 2021 with karakia and ceremony.

This is a 45-minute show with no interval.

## The Air Between Us / A Figure Exhales

Free/Dance. Coyle Park, Point Chevalier (outdoor location).



**Relaxed performances:**  
**Friday 5–Sunday 7**  
**March, 6pm**

Aerial dance means the performers are safely connected to the trees by ropes and will dance while in the air. This is very safe and they will not fall.

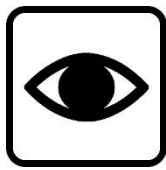
*A Figure Exhales* and *The Air Between Us* are presented as a double bill, which means you get to see both shows in the same evening.

*The Air Between Us* is a captivating outdoor aerial dance event performed mid-air between trees while *A Figure Exhales* is a site-specific outdoor performance dance featuring dancers wearing long, hooded dresses.

This event is 40 minutes long, with a small break between the two shows. It is an outdoor event, so please bring both sunscreen and warm clothing. You may want to also bring a small chair if you would prefer not to stand the whole time.

## The Artist

Theatre/Circus/Comedy. Rangatira, Q Theatre.



**Very Visual Access performance:**

**Thursday 18 March, 6:30pm**

International circus sensation Thomas Monckton is back with his latest and greatest solo show, a physical theatre comedy masterpiece about a nutty painter with an almighty creative block.

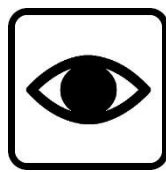
The follow-up to Monckton's worldwide smash hit *The Pianist*, *The Artist* is a hilarious and endlessly appealing story without words for comedy lovers, pranksters and the struggling artiste in all of us.

This show is 55 minutes with no interval.



## The Griegol

Theatre. Rangatira, Q Theatre.



**Very Visual Access performance:**

**Sunday 7 March, 2pm**

Very visual family friendly show. Suitable for hard of hearing (contains music, no dialogue).

Trick of the Light Theatre's new show is an eerie, elegant tale without words about death, love, grief and monsters. After a girl's grandma passes away, she starts to suspect she is being pursued by the smoke demon shapeshifter from the old woman's stories.

This show is 50 minutes with no interval.

## The Haka Party Incident

Theatre. ASB Waterfront Theatre.



**Audio Described performance:**

**Wednesday 10 March, 7pm**

**Touch tour begins 90 minutes before the performance (5:30pm)**



**NZSL Interpreted performance:**

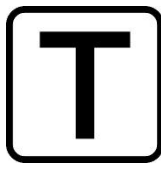
**Friday 12 March, 8pm**

The last New Zealand war took place in Auckland in 1979. It lasted three minutes. The Haka Party Incident re-tells the day a group of University of Auckland engineering students rehearsing their annual tradition of a mock haka were confronted by the activist group He Taua. Violence erupted that sent ripples through the nation and changed race relations in New Zealand forever.

This show is 90 minutes with no interval.

## Voices at The End

Music. Great Hall, Auckland Town Hall.



Thursday 18 March, 8pm

**Artist talk from John Psathas and Touch Tour will begin 90 minutes before the performance (6:30pm).**

The Festival presents internationally renowned New Zealand composer John Psathas' immersive world premiere – featuring six grand pianos and a sweeping digital soundtrack, with a Steve Reich work as well.

Taking inspiration from the documentary *Planetary*, you'll be transported by sounds and music from around the globe.

This show is 70 minutes with no interval.